
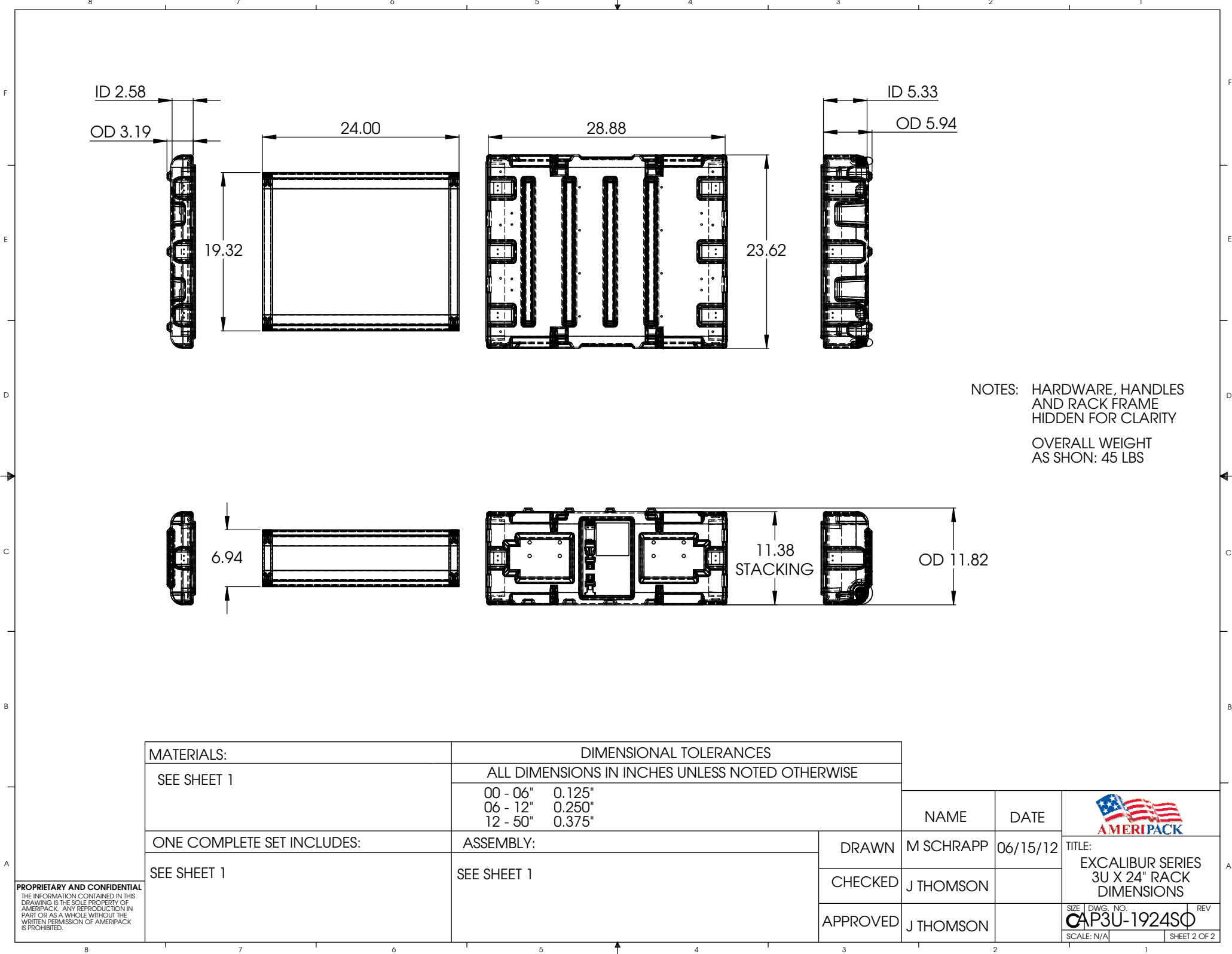


REVISIONS			
LEVEL	DESCRIPTION	APPROVED	DATE

MATERIALS:		DIMENSIONAL TOLERANCES	
ROTOMOLDED HIGH DENSITY POLYETHYLENE 6061 ALUMINUM RACK		ALL DIMENSIONS IN INCHES UNLESS NOTED OTHERWISE	
		00 - 06"	0.125"
		06 - 12"	0.250"
		12 - 50"	0.375"
ONE COMPLETE SET INCLUDES:	ASSEMBLY:	DRAWN	M SCHRAPP
ONE (1) CASE, AS SHOWN	XXXX	CHECKED	J THOMSON
		APPROVED	J THOMSON


NAME	DATE	
M SCHRAPP	06/15/12	
J THOMSON		TITLE: EXCALIBUR SERIES 3U X 24" RACK SHOCK RACK
J THOMSON		SIZE DWG. NO. REV CAP3U-1924SQ
SCALE: N/A		SHEET 1 OF 2

PROPRIETARY AND CONFIDENTIAL
THE INFORMATION CONTAINED IN THIS
DRAWING IS THE SOLE PROPERTY OF
AMERIPACK. ANY REPRODUCTION IN
PART OR AS A WHOLE WITHOUT THE
WRITTEN PERMISSION OF AMERIPACK
IS PROHIBITED.



NOTES: HARDWARE, HANDLES
AND RACK FRAME
HIDDEN FOR CLARITY

OVERALL WEIGHT
AS SHON: 45 LBS

MATERIALS:		DIMENSIONAL TOLERANCES						
SEE SHEET 1		ALL DIMENSIONS IN INCHES UNLESS NOTED OTHERWISE						
		00 - 06"	0.125"					
		06 - 12"	0.250"		NAME	DATE		
		12 - 50"	0.375"					
ONE COMPLETE SET INCLUDES:	ASSEMBLY:	DRAWN	M SCHRAPP	06/15/12	TITLE: EXCALIBUR SERIES 3U X 24" RACK DIMENSIONS			
SEE SHEET 1	SEE SHEET 1		CHECKED	J THOMSON				
			APPROVED	J THOMSON				
					SIZE DWG. NO. REV		CAP3U-1924SQ	
					SCALE: N/A			SHEET 2 OF 2